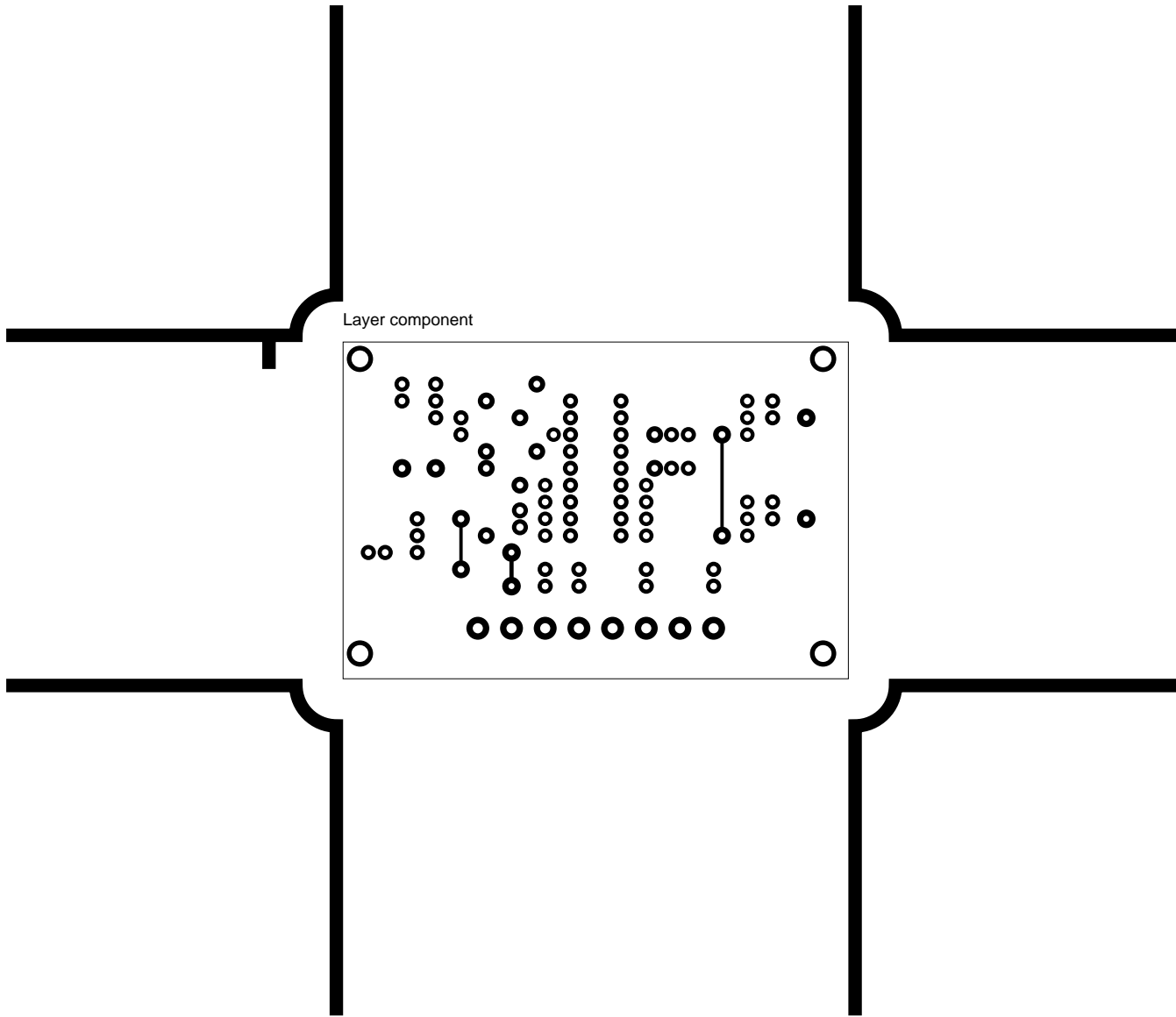
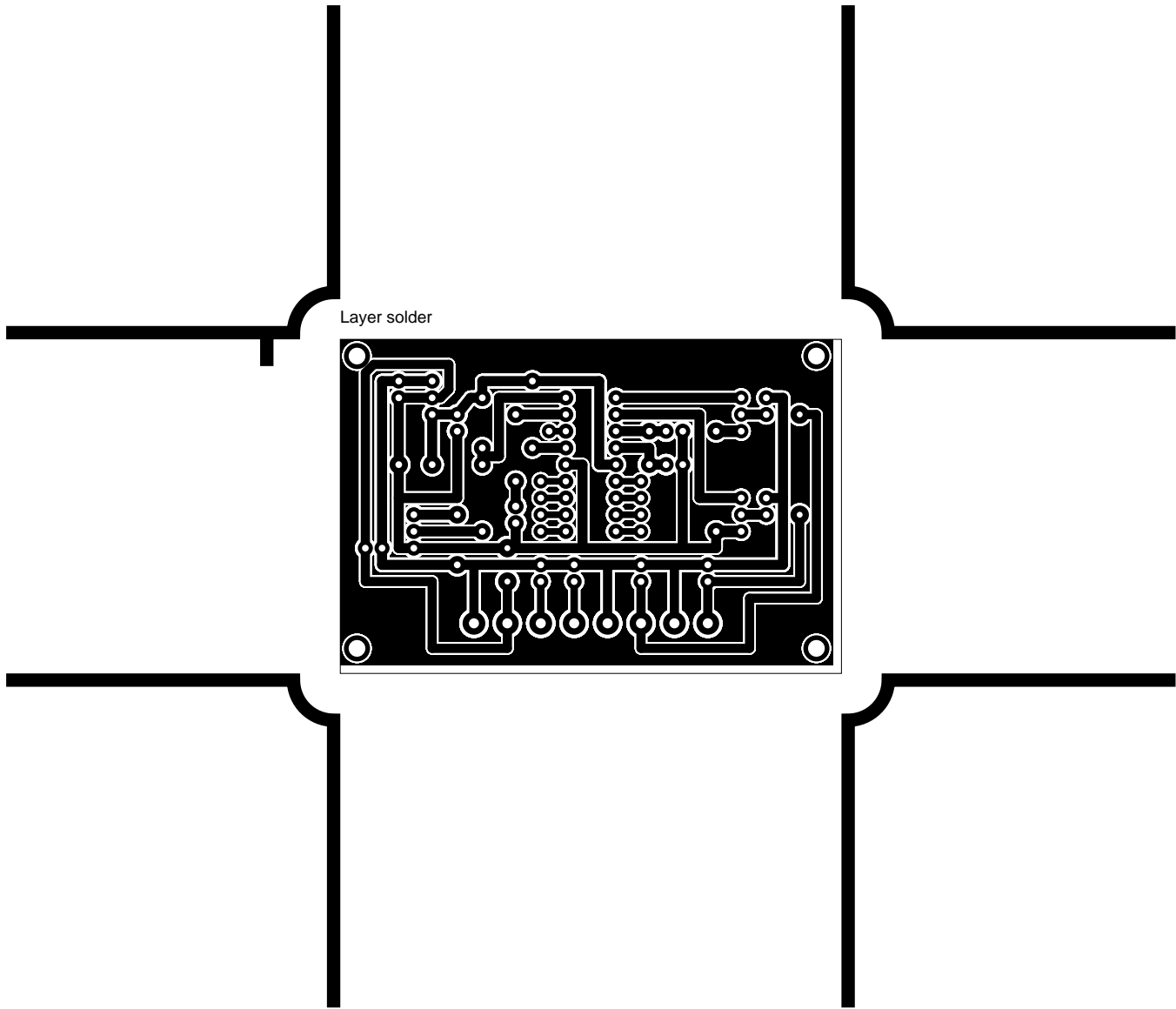


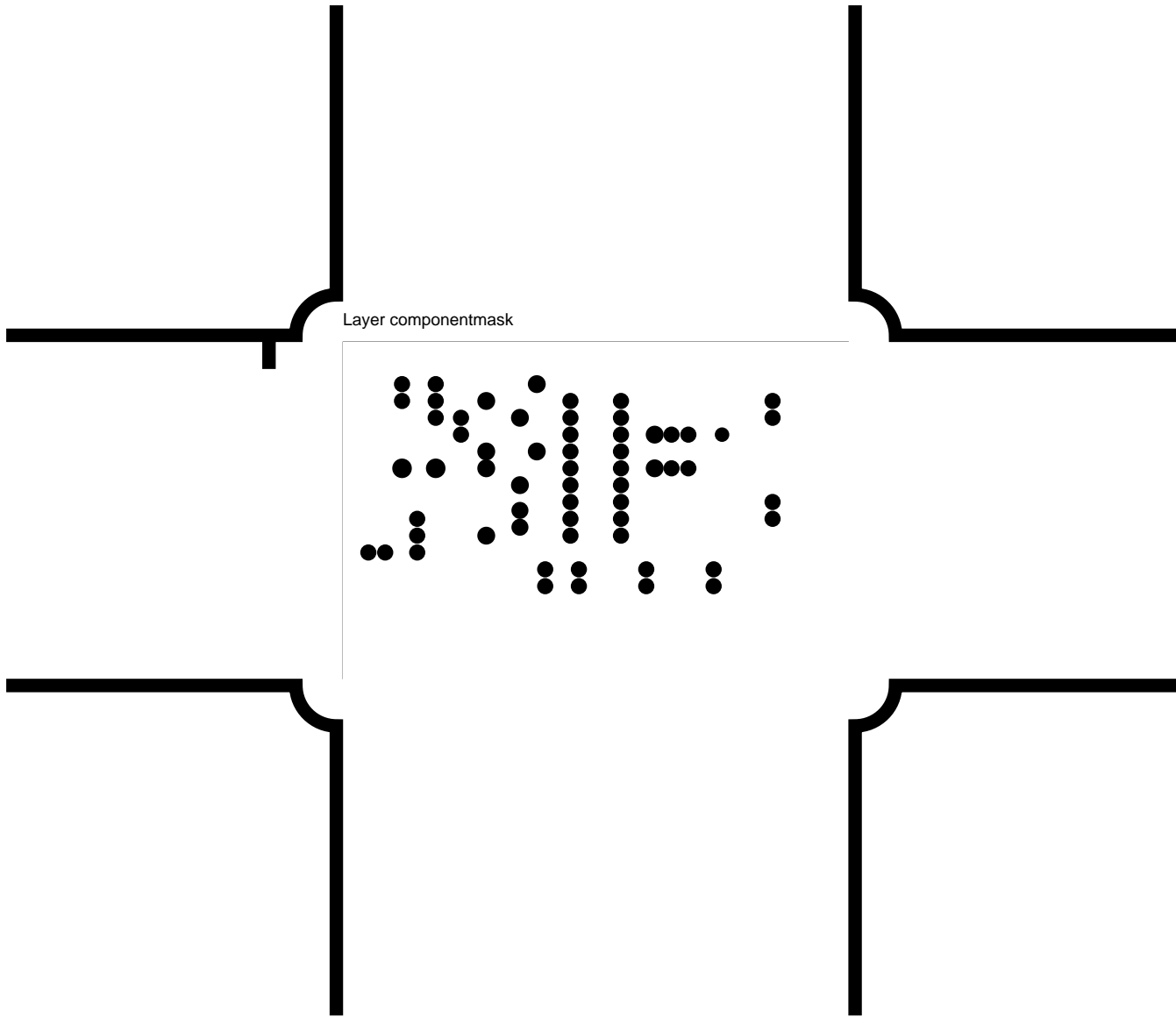
2. component
3. solder
4. componentmask
5. soldermask
6. plated-drill
7. topsilk
8. bottomsilk
9. topassembly
10. bottomassembly
11. fab



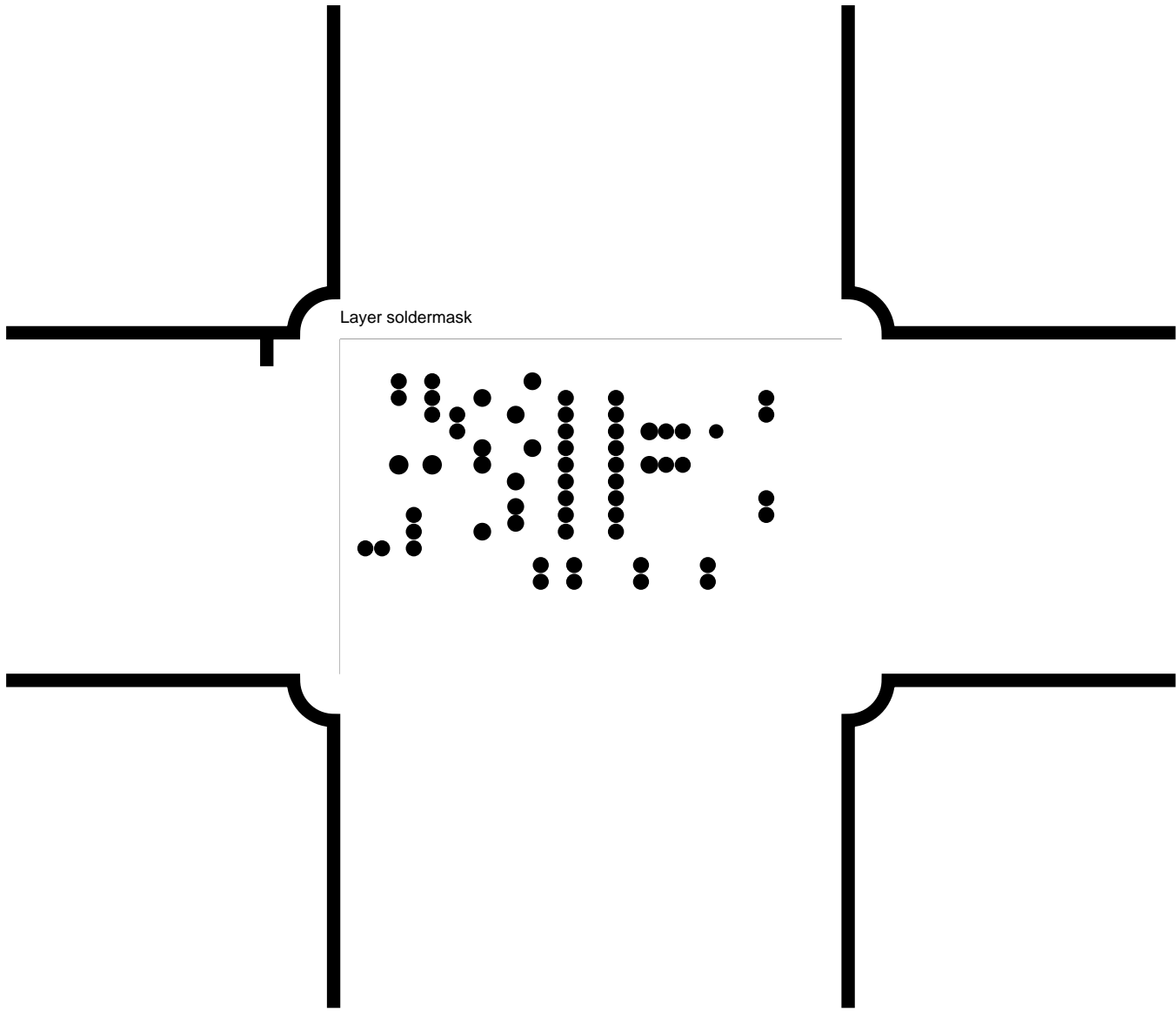
Layer component

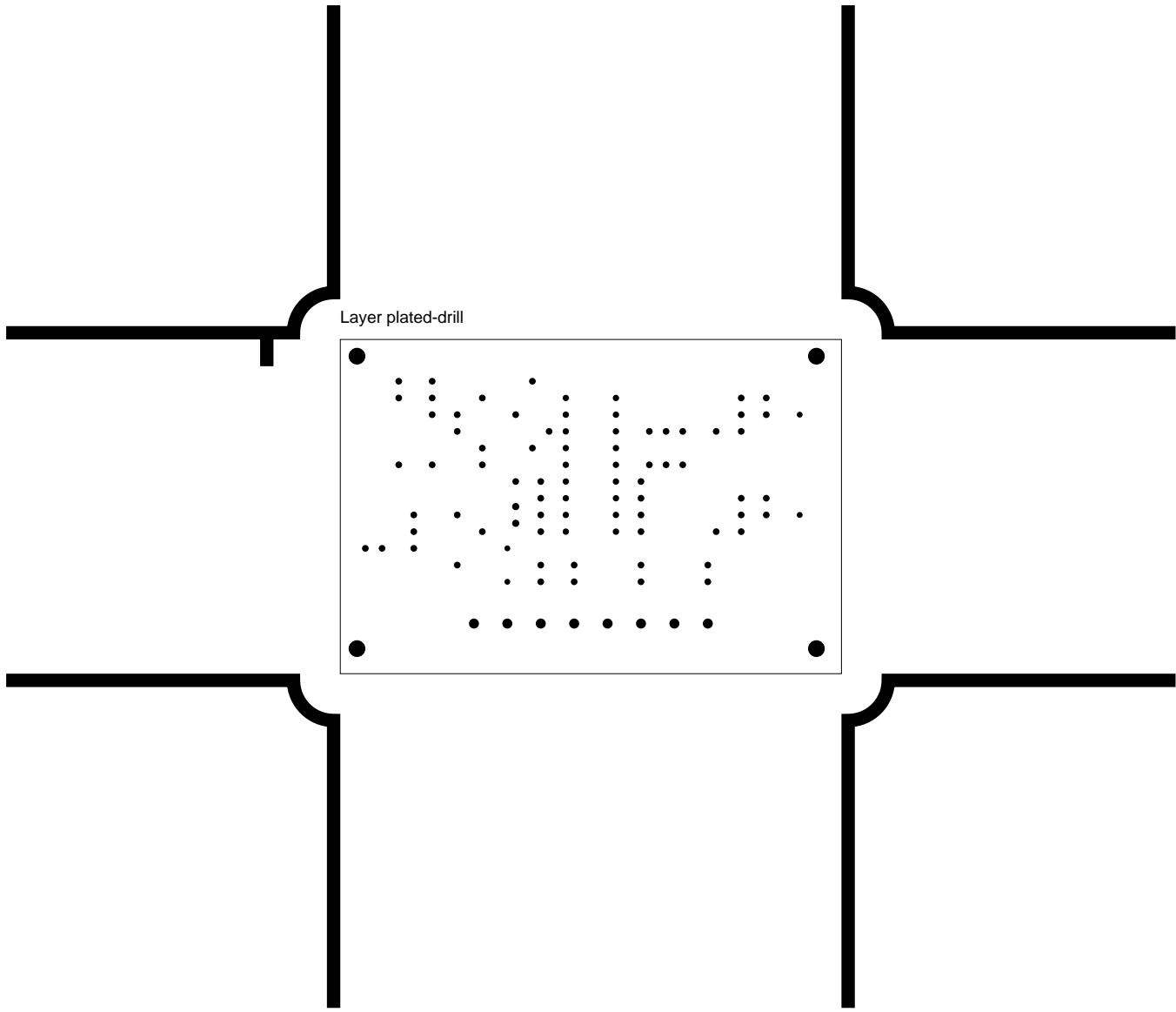


Layer solder

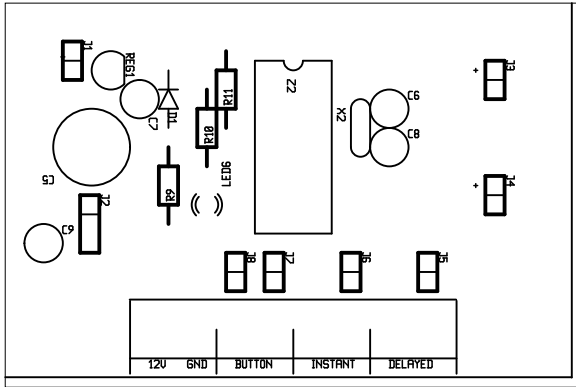


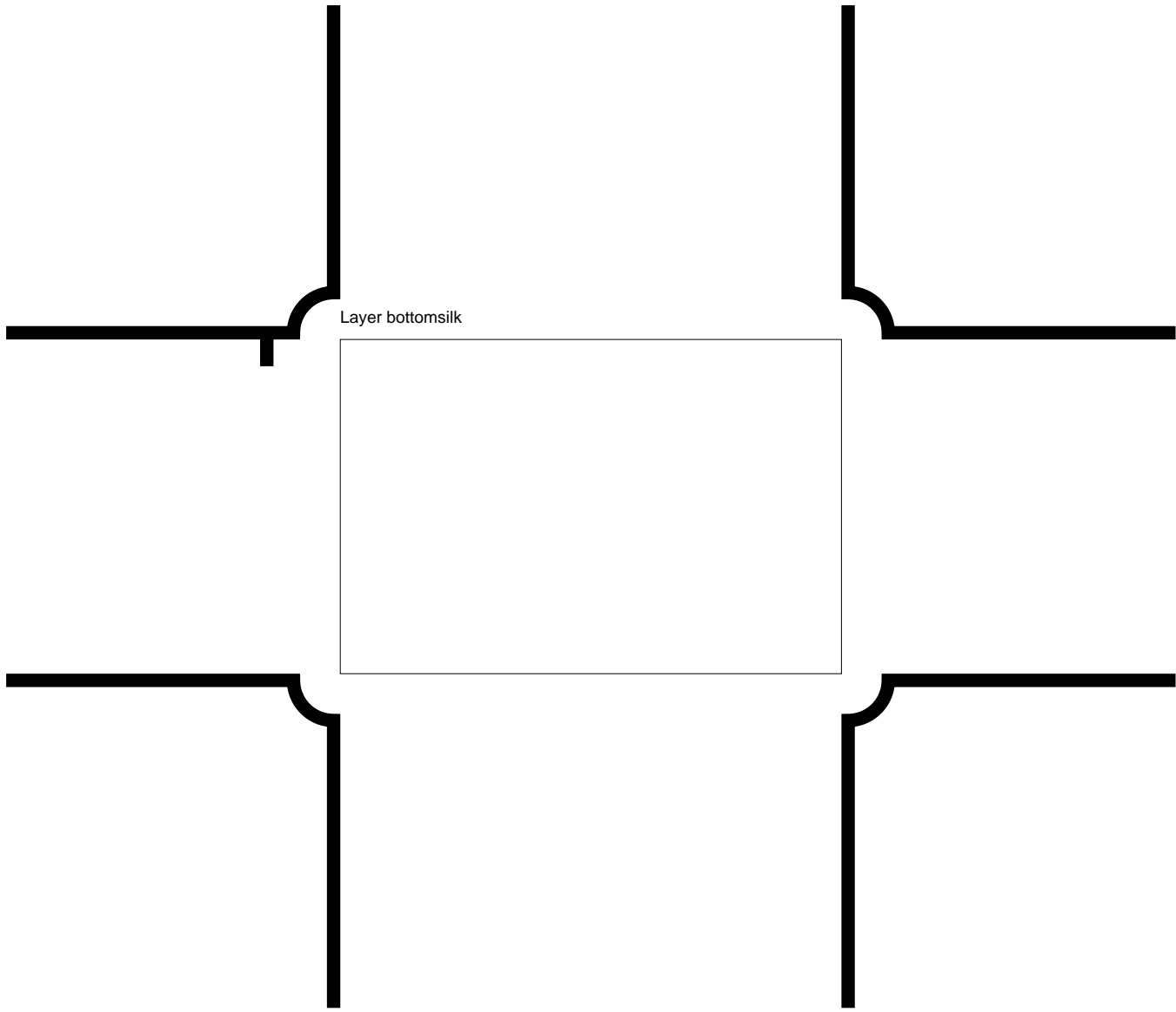
Layer componentmask





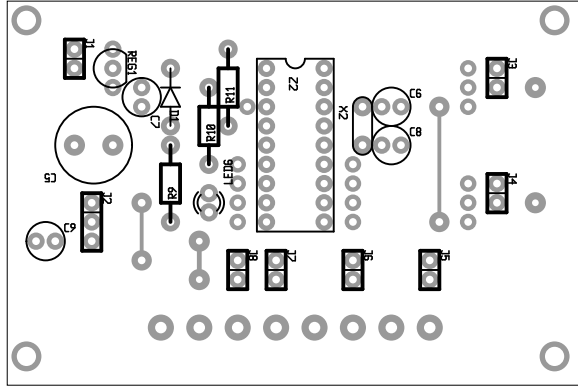
Layer topsilk

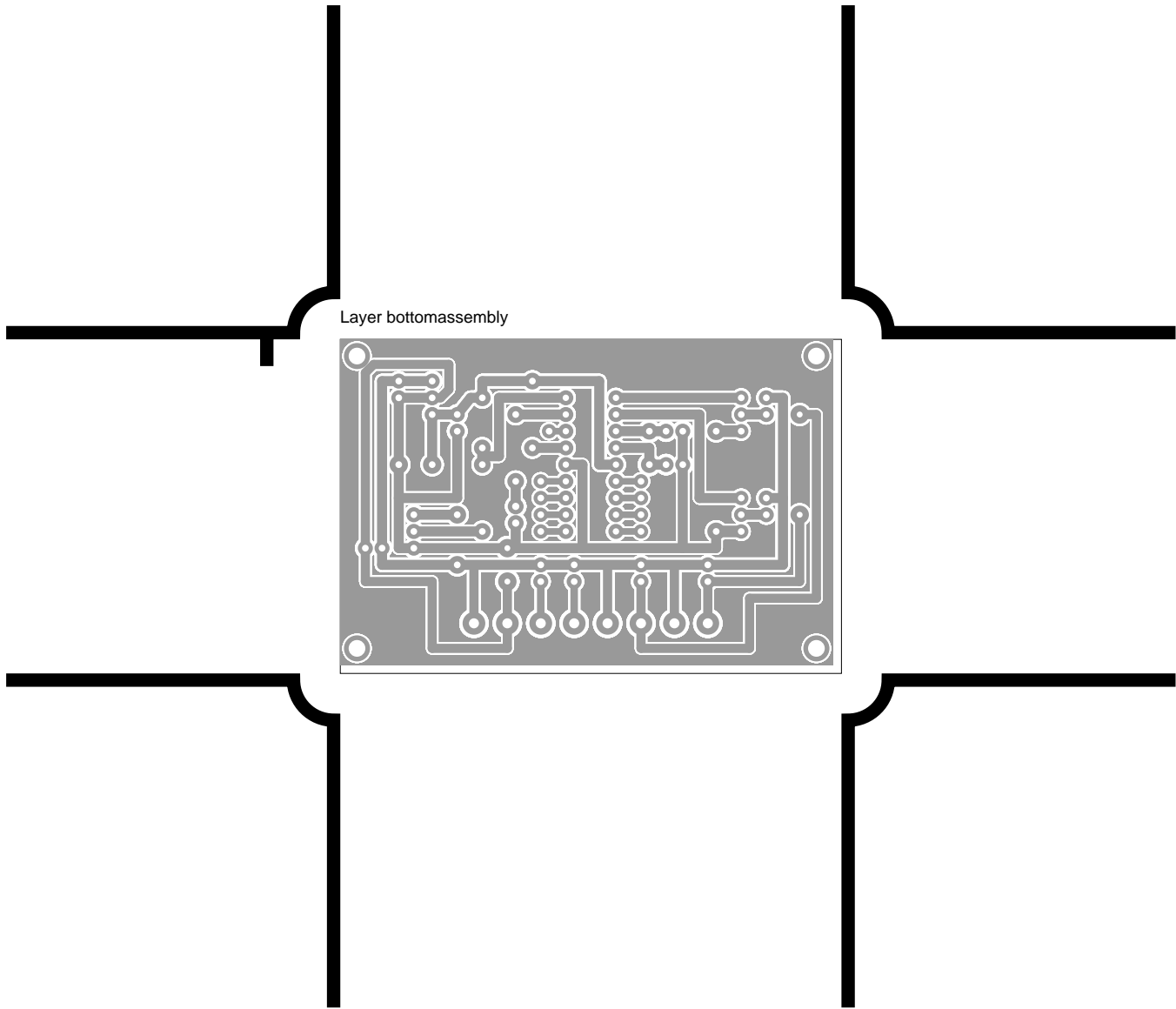




Layer bottomsilk

Layer topassembly





There are 6 different drill sizes used in this layout, 95 holes total

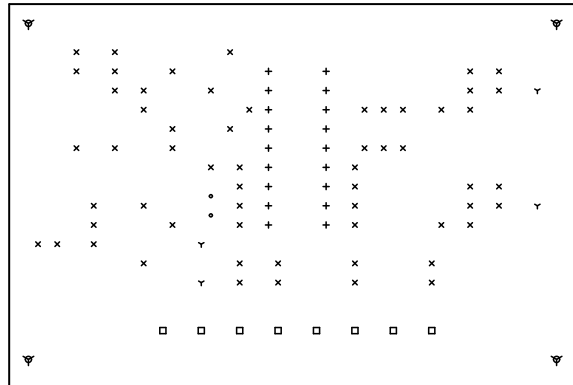
Symbol	Diam. (Inch)	Count	Plated?
∇	<u>0.035</u>	<u>4</u>	<u>YES</u>
+	<u>0.038</u>	<u>18</u>	<u>YES</u>
x	<u>0.040</u>	<u>59</u>	<u>YES</u>
°	<u>0.043</u>	<u>2</u>	<u>YES</u>
□	<u>0.060</u>	<u>8</u>	<u>YES</u>
∇	<u>0.100</u>	<u>4</u>	<u>YES</u>

Title: (unknown) - Fabrication Drawing

Author: James Cameron

Date: Mon Oct 9 09:31:24 2006 UTC

Maximum Dimensions: 2999 mils wide, 2000 mils high



Board outline is the centerline of this 10 mil rectangle - 0,0 to 2999,2000 mils